

VILLAGES OF WINDSOR PLAT ONE

A PLANNED UNIT DEVELOPMENT BEING A PART OF VILLAGES OF WINDSOR PUD
BEING A REPLAT OF A PORTION OF BLOCK 43, "PALM BEACH FARMS COMPANY PLAT NO. 3
AS RECORDED IN PLAT BOOK 2, PAGES 45 THROUGH 54 OF THE PUBLIC RECORDS OF PALM BEACH
COUNTY, FLORIDA, LYING IN SECTIONS 6 AND 7, TOWNSHIP 45 SOUTH, RANGE 42 EAST,
PALM BEACH COUNTY, FLORIDA

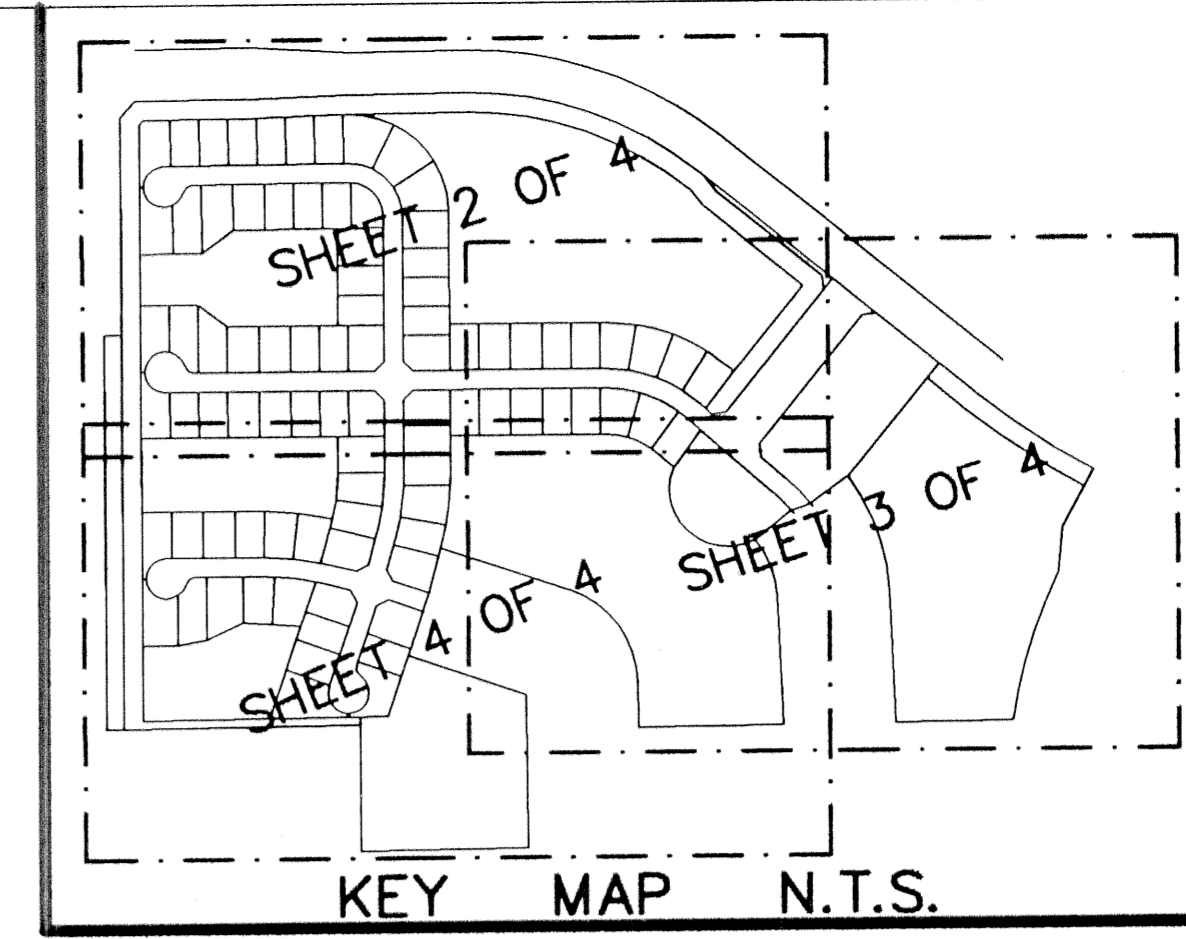
THIS INSTRUMENT PREPARED BY
DAVID P. LINDLEY
OF

CAULFIELD and WHEELER, INC.

SURVEYORS - ENGINEERS - PLANNERS
7301-A WEST PALMETTO PARK ROAD, SUITE 100A
BOCA RATON, FLORIDA 33433 - (561)392-1991
JANUARY - 2001

MATCH LINE
SHEET 2 OF 4

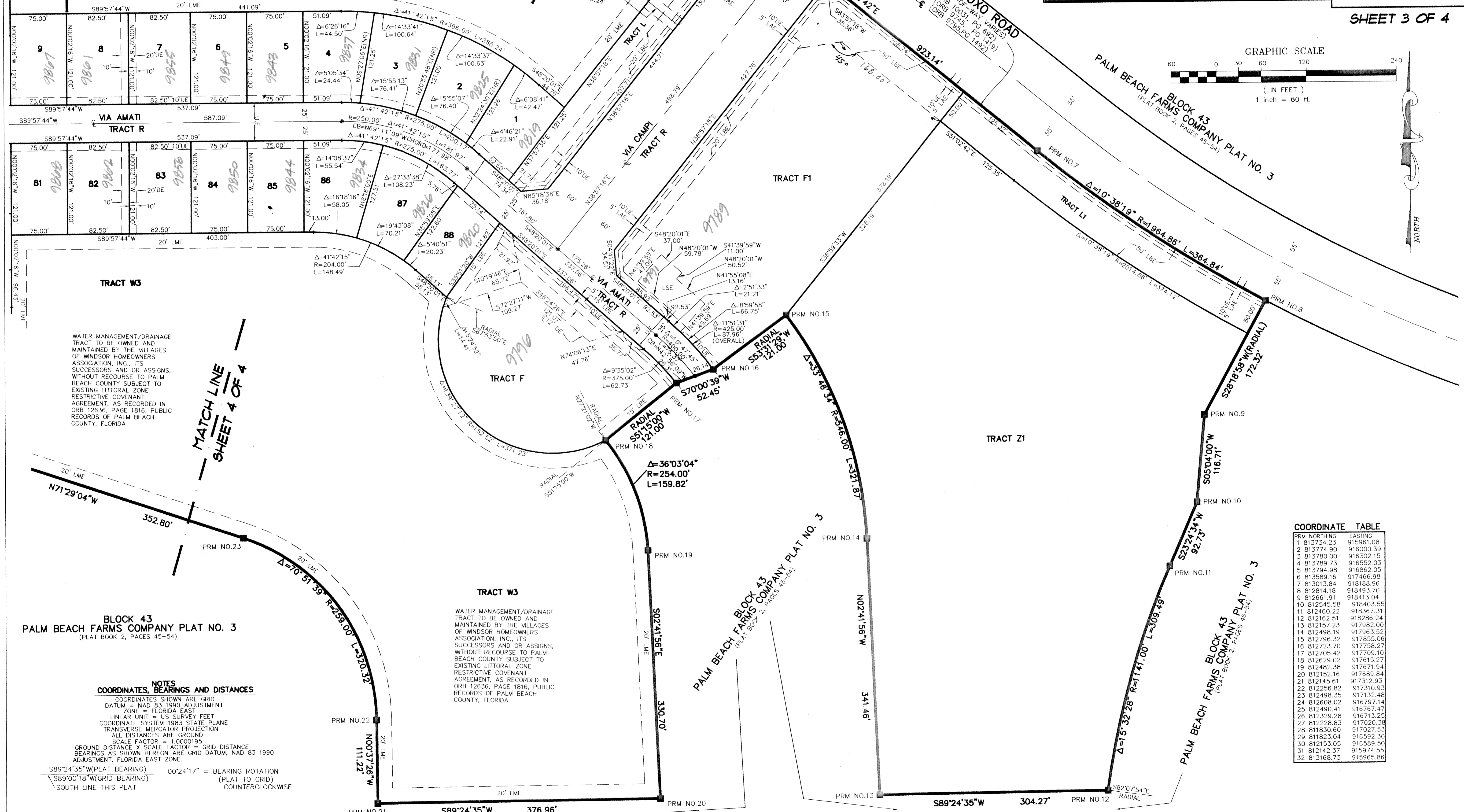
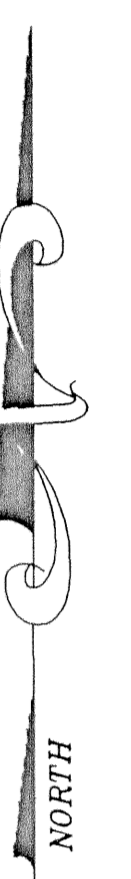
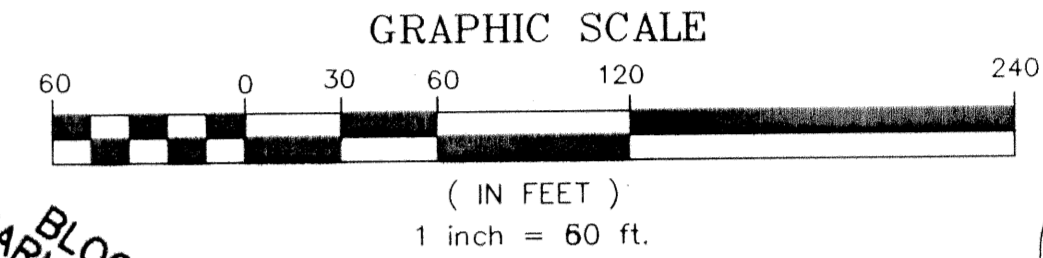
MATCH LINE
SHEET 2 OF 4



STATE OF FLORIDA
COUNTY OF PALM BEACH
THIS PLAT WAS FILED FOR
RECORD AT _____ M.
THIS _____ DAY OF _____
A.D. 2001 AND DULY RECORDED
IN PLAT BOOK _____ ON
PAGES _____ AND _____

DOROTHY H. WILKEN
CLERK CIRCUIT COURT

BY: _____
DEPUTY CLERK



WATER MANAGEMENT/DRAINAGE TRACT TO BE OWNED AND MAINTAINED BY THE VILLAGES OF WINDSOR HOMEOWNERS ASSOCIATION, INC., ITS SUCCESSORS AND OR ASSIGNS, WITHOUT RECOURSE TO PALM BEACH COUNTY SUBJECT TO EXISTING LITTORAL ZONE RESTRICTIVE COVENANT AGREEMENT, AS RECORDED IN ORB 12636, PAGE 1816, PUBLIC RECORDS OF PALM BEACH COUNTY, FLORIDA

WATER MANAGEMENT/DRAINAGE TRACT TO BE OWNED AND MAINTAINED BY THE VILLAGES OF WINDSOR HOMEOWNERS ASSOCIATION, INC., ITS SUCCESSORS AND OR ASSIGNS, WITHOUT RECOURSE TO PALM BEACH COUNTY SUBJECT TO EXISTING LITTORAL ZONE RESTRICTIVE COVENANT AGREEMENT, AS RECORDED IN ORB 12636, PAGE 1816, PUBLIC RECORDS OF PALM BEACH COUNTY, FLORIDA

**BLOCK 43
PALM BEACH FARMS COMPANY PLAT NO. 3**
(PLAT BOOK 2, PAGES 45-54)

NOTES COORDINATES, BEARINGS AND DISTANCES

COORDINATES SHOWN ARE GRID
DATUM = NAD 83 1990 ADJUSTMENT
ZONE = FLORIDA EAST
LINEAR UNIT = US SURVEY FEET
COORDINATE SYSTEM 1983 STATE PLANE
TRANSVERSE MERCATOR PROJECTION
ALL DISTANCES ARE GROUND
SCALE FACTOR = 1.0000195
GROUND DISTANCE X SCALE FACTOR = GRID DISTANCE
BEARINGS AS SHOWN HEREON ARE GRID DATUM, NAD 83 1990
ADJUSTMENT, FLORIDA EAST ZONE.
S89°24'35"W(PLAT BEARING) 00°24'17" = BEARING ROTATION
S89°00'18"W(GRID BEARING) (PLAT TO GRID)
SOUTH LINE THIS PLAT COUNTERCLOCKWISE

COORDINATE TABLE

PRM	NORTHING	EASTING
1	813734.23	915961.08
2	813774.90	916000.39
3	813780.00	916302.15
4	813789.73	916552.03
5	813794.98	916862.05
6	813589.16	917466.98
7	813013.84	918188.96
8	812814.18	918493.70
9	812661.91	918413.04
10	812545.58	918403.55
11	812460.22	918367.31
12	812162.51	918286.24
13	812157.23	917982.00
14	812498.19	917963.52
15	812796.32	917855.06
16	812723.70	917758.27
17	812705.42	917709.10
18	812629.02	917615.27
19	812482.38	917671.94
20	812152.16	917689.84
21	812145.61	917312.53
22	812256.82	917310.93
23	812498.35	917132.48
24	812608.02	916797.14
25	812490.41	916767.47
26	812329.28	916713.25
27	812228.83	917020.38
28	811830.60	917027.53
29	811823.04	916592.30
30	812153.05	916589.50
31	812142.37	915974.55
32	813168.73	915965.86